

Be Red Cross Ready

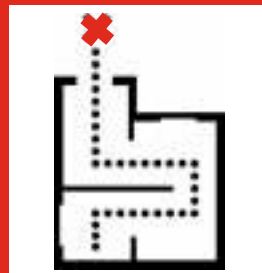


**American
Red Cross**

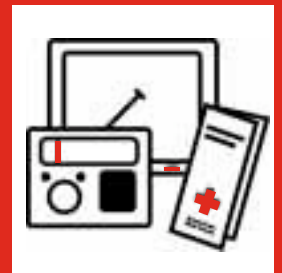
American Red Cross Lakeland Chapter



Get a Kit



Make a Plan



Be Informed

2007 Annual Report



A Message From the Board Chair

By: Jeff Bassindale

As our Lakeland Chapter reflects on its 2006-2007 year, the Board thanks our tremendous volunteer group. Without our volunteer base, our objectives could not be met.

As a board, we are involved in many facets of this chapter's operation. One of the areas we can have the biggest impact is development of the chapter by fundraising. These funds are needed to ensure that resources continue to provide specific services to our chapter's service area. We need to remind our potential donors that we are not subsidized by the national office; all local services are funded locally.

Whether responding to a disaster, providing transportation or teaching lifesaving skills, it's our local volunteers, along with local funds, that make these services possible. This past year was memorable, considering the number and severity of disasters The Lakeland Chapter responded to. The actions of our staff and volunteers were truly remarkable.

The example I often use is this: Imagine you and your family are coming home late on Christmas Eve after visiting relatives. It is cold and late and the temperature is 5 below zero. As you turn down your street, you notice that your home is on fire. It is comforting to know that The Red Cross Lakeland Chapter's disaster team, consisting of volunteers, will be there to assist with shelter, food and clothing, providing you comfort when you need it the most.

Thank you so much for your support this past year.

2006-2007 Lakeland Chapter Board of Directors



Jeff Bassindale
Board Chair
DFI - Total Business
Solutions



Ray Kopish
Vice Chair
Green Bay Area
Chamber Of Commerce



Eric Witczak
Treasurer
Nicolet National Bank



Jim Gagnon, Jr.
Secretary
Gagnon Clay Products



Pat Beimborn
Los Banditos
Restaurant



David Cowles
The Mariner Motel



Cathy Dworak
Green Bay Packers



Gerald Henley
Fox Cities Performing
Arts Center



Melissa Jackson
University of Wisconsin
Green Bay



Charlie Novak
Novak Agency, Inc.



Kim Peterson
Bellin Health



Chad Resar
Hinkfuss Sickel
Petitjean & Wieting



John (Jay) Thompson
Everson, Whitney,
Everson & Brehm S.C.



Chris Vanderheyden
Double Digit Sales
Growth, LLC



Julie Wall
Mortenson, Matzelle &
Meldrum, Inc.

From the Director's Desk *By: Steven J. Maricque*



Our fiscal year of 2007 brought about many challenges because of the significant increase we experienced in responding to local disasters. We responded to two large disasters (the Ellison Bay explosion and a tornado that ripped through Oconto County) that placed strain on our human and financial resources locally. However strained, we responded with compassion and caring for those individuals that needed us the most during a time of personal disaster. Our disaster teams were there to provide the valuable services of shelter, food, clothing and emotional support.

We were truly blessed by the wonderful, giving volunteers who continue to answer the call to help deliver our services within our community. Whether responding to a disaster, providing transportation or teaching life saving skills, our volunteers are there to make a difference. Thank you to our most valuable resource.

Fiscal 2007 was a difficult year financially. An increase of over 100% for direct assistance dollars provided for disaster services, uncontrollable gasoline prices and vehicle maintenance expense increases, support for the Marinette/Menominee area and delays experienced in receipt of an individual bequest and transportation grant funding resulted in a decrease of our net assets of 6.6% or \$113,176 for the fiscal year 2007.

Our staff and volunteers continue to be dedicated towards our high standards of service delivery focused on the Red Cross mission and making a difference in our community. Thanks again to the many volunteers and financial donors who provide the means through which our services are provided to those in need.

Your support is greatly appreciated.

Lakeland Chapter Staff

Steve Maricque
Executive Director

Joan Bauder
Health and Safety Nurse Aide Evaluator

Jane Bent
Health and Safety Nurse Aide
Instructor/Evaluator

Janet Beringer
Health and Safety Nurse Aide Evaluator

Brenda Curtis
Door County Transportation Coordinator

Tina De Grave
Transportation Office Manager

Charlene Duginske
Health and Safety Nurse Aide
Instructor/Evaluator

Abby Eparvier
Health and Safety Workplace Instructor

Paul Exl
Health & Safety Workplace Instructor

Morgan Fisher
Health and Safety Workplace Instructor

Judy Gregory
Emergency Services Director

Sarah Kerbel
Health and Safety Community Coordinator

Debbie Haduch
Office Manager Marinette/Menominee, MI

Deborah Hintz
Health and Safety Workplace Coordinator

Gloria Jaeger
Health and Safety Nurse Aide
Instructor/Evaluator

Patricia Johnson
Health & Safety Workplace Instructor

Ellen Knight
Health & Safety Workplace Instructor

Dawn Krull
Health & Safety Director

Beverly Mann
Health and Safety Nurse Aide Evaluator

Charles (Joe) McGinnis
Health and Safety Workplace Instructor

Donna Mc Intyre
Nurse Assistant Training Instructor

Ramona Morehouse
Health and Safety Nurse Aide Evaluator

Jennifer Nelson
Transportation Director

Pauline Voltmer
Nurse Assistant Training
Instructor/Evaluator

Christine Van Hefty
Nurse Assistant Training
Instructor/Evaluator

Lon Sohrweide
Accountant

Bonnie VandenBranden
Transportation Dispatch

Bruce Vanden Plas
Health & Safety Workplace Instructor

Jody Weyers
Volunteer & Communications Director

Trisha Wisnicky
Health & Safety Workplace Instructor

Betty Wolske
Transportation Dispatch

Disaster Services

Each year, the American Red Cross responds immediately to more than 70,000 disasters, including house or apartment fires (the majority of disaster responses), hurricanes, floods, earthquakes, tornadoes, hazardous materials spills, transportation accidents, explosions, and other natural and man-made disasters.

Red Cross disaster relief focuses on meeting people's immediate emergency disaster-caused needs. When a disaster threatens or strikes, the Red Cross provides shelter, food, and health and mental health services to address basic human needs. In addition to these services, the core of Red Cross disaster relief is the assistance given to individuals and families affected by disaster to enable them to resume their normal daily activities independently.

The Red Cross also feeds emergency workers, handles inquiries from concerned family members outside the disaster area, provides blood and blood products to disaster victims, and helps those affected by disaster to access other available resources.



Governor Doyle with Red Cross Volunteers at the disaster site in Ellison Bay. (back row from left to right) are Floyd Veenstra, Chris Mann, Kevin Koestner, Governor Doyle, Hope Koestner, Carl and Darlene Dreves, and Henry Tworak. (front row from left to right.) Randy Winkler, Jody Weyers, Amy DeMeter, Jim Bluemel, Tina Geronimi and Gayle Hein.

Armed Forces Emergency Services:

Today's American Red Cross is keeping pace with the changing military. Using the latest in computer and telecommunications technology, the Red Cross sends communications on behalf of family members who are facing emergencies or other important events to members of the U.S. Armed Forces serving all over the world. These communications are delivered around-the-clock, 365 days a year.

Both active duty and community-based military can count on the Red Cross to provide emergency communications that link them with their families back home, access to financial assistance, counseling and assistance to veterans. Red Cross Armed Forces Emergency Services personnel work in nearly 700 chapters in the United States, on 62 military installations around the world and with our troops in Kuwait, Afghanistan and Iraq.

International Services:

The American Red Cross helps vulnerable people around the world to prevent, prepare for, and respond to disasters, complex humanitarian emergencies, and life-threatening health conditions.

The American Red Cross accomplishes this goal by working within the International Red Cross and Red Crescent Movement—the world's largest humanitarian network with more than 180 Red Cross and Red Crescent national societies and more than 100 million volunteers. In all our work, we abide by the seven fundamental principles: humanity, impartiality, neutrality, independence, voluntary service, unity, and universality.

"Thank you for the wonderful job you did after the explosion at Cedar Grove Resort. Everything was so well organized and everyone provided the support towards our family that was needed"

Lakeland Chapter Disaster Service Numbers		
	2007	2006
Emergency Assistance:	429 clients assisted	255 clients assisted
Military Assistance:	208 cases	184 cases
International Services:	1 case	2 cases

Local Response:

The majority of disaster the Lakeland Chapter Volunteers are responding to are house or apartment fires. This past year, not only did we have an increase in number of families assisted but, we responded to two major disaster relief incidents in our chapter area. July 10, 2006 we received the call to assist families that were displaced due to explosions in downtown Ellison Bay and on June 7th, 2007 volunteers responded to a tornado that touched down in the Riverview, Oconto County area.

In total, for those two incidents, the American Red Cross Lakeland Chapter assisted 71 families. We had a total of 84 Red Cross Volunteers assist in responding to the needs of the families and delivered over 6,000 meals for emergency workers.

Health & Safety Services

For nearly a century, the American Red Cross has prepared people to save lives through health and safety education and training. From first aid, CPR and bloodborne pathogens training to swimming and lifeguarding, HIV/AIDS education and Babysitter's Training, American Red Cross Preparedness programs help people lead safer and healthier lives. The Red Cross constantly strives to respond to the preparedness concerns of Americans at home, in school and in the workplace. Today's innovative programs also include teaching lay persons and professionals how to use automated external defibrillators (AEDs) to save victims of sudden cardiac arrest. Last year, nearly 11 million people enrolled in American Red Cross health and safety courses.

We offer the community a variety of classes to help people prevent, prepare and respond to emergencies. Some of those classes include:

- ▶ Adult, Child and Infant CPR/AED
- ▶ First Aid
- ▶ Pet First Aid
- ▶ Babysitter's Training
- ▶ Bloodborne Pathogens Training
- ▶ Instructor Training course
- ▶ Nurse Assistant Training

Workplace training courses include programs to help your company stay prepared for virtually any life-threatening situation. Businesses can build the program that works for them using our modular curriculum.

Workplace class options include:

- ▶ Adult, Child and Infant CPR/AED
- ▶ First Aid
- ▶ Ergonomics
- ▶ Oxygen Administration
- ▶ Slips, Trips and Falls
- ▶ Back Injury Prevention
- ▶ Workplace Violence Awareness
- ▶ Managing Stress
- ▶ Your Heart Matters



Students in the Babysitter's Training course learning how to bandage and immobilize an injured arm.



Dawn Krull, Health and Safety Director, promoting American Red Cross Aquatics Program at the Wisconsin Park and Recreation Association Annual Conference in Green Bay, November 8th and 9th, 2007.

Lakeland Chapter Health and Safety Service Numbers

Courses	2007	2006	Enrollment	2007	2006
First Aid/ CPR/AED	760	861	First Aid/ CPR/AED	5,364	5,778
Aquatics	954	950	Aquatics	6,221	6,418
Caregiving	76	89	Caregiving	930	985

Transportation Services

The American Red Cross Lakeland Chapter Transportation Service is a low-cost service for individuals 60 and older and those with disabilities. Whether taking someone to a medical appointment, to dialysis, or to the grocery store, this essential service makes a difference in the lives of so many who might otherwise be homebound. The obstacles associated with aging and disabilities can lead to isolation, loss of independence, unfulfilled potential and a diminished quality of life. To these clients, transportation is much more than just a ride: It is a means to “age in place”, in the environment of choice and with a familiar support system.

The transportation program began in the Green Bay area in 1966 with volunteer drivers using their own vehicles. Today, we have a fleet of 31 vehicles including wheelchair accessible vans, small buses and cars serving clients in the Metro Green Bay, Pulaski and Door County area.



Volunteer Driver, Tom Abrahamson (right) and Garnet Jankowski, transportation client, getting a ride to her medical appointment in one of the wheelchair accessible vans.



Volunteer Driver, Ken Deterville, (right) transporting Ginger Drake, home from her place of employment.

Thank You

“Macular degeneration has left me with profoundly low vision, and I am no longer able to drive. Your transportation service has been a cornerstone in my independence, allowing me to get to health appointments as needed. I am grateful.”

*- Harry C.
Transportation Client*

“Thank you and your wonderful volunteer drivers who helped me get to my doctors appointments. I am grateful to know I can call the Red Cross for help.”

*- Joyce P.
Transportation Client*



(from left-right) Volunteer Transportation Drivers - John Steinbauer, Jerry Prellwitz, Richie Birkolcz, Bob Wenninger, Gladys Paitel and Dave Shefbik.

Lakeland Chapter Transportation Service Numbers

	Clients Served	Rides Provided	Total Volunteers	Volunteer Hours	Fleet of Vehicles	Mileage
2007	1,853	66,635	120	25,072	31	616,596
2006	1,504	64,990	109	20,632	29	532,741

